

Humbleton Hillfort walk

A steep climb to the summit of Humbleton Hill with its Iron Age hillfort and fantastic views.

- Start: Homildon Cottage
- Finish: Homildon Cottage
- Time: 30 minutes (one way – short route)
- Distance: 0.75 miles (one way – short route)

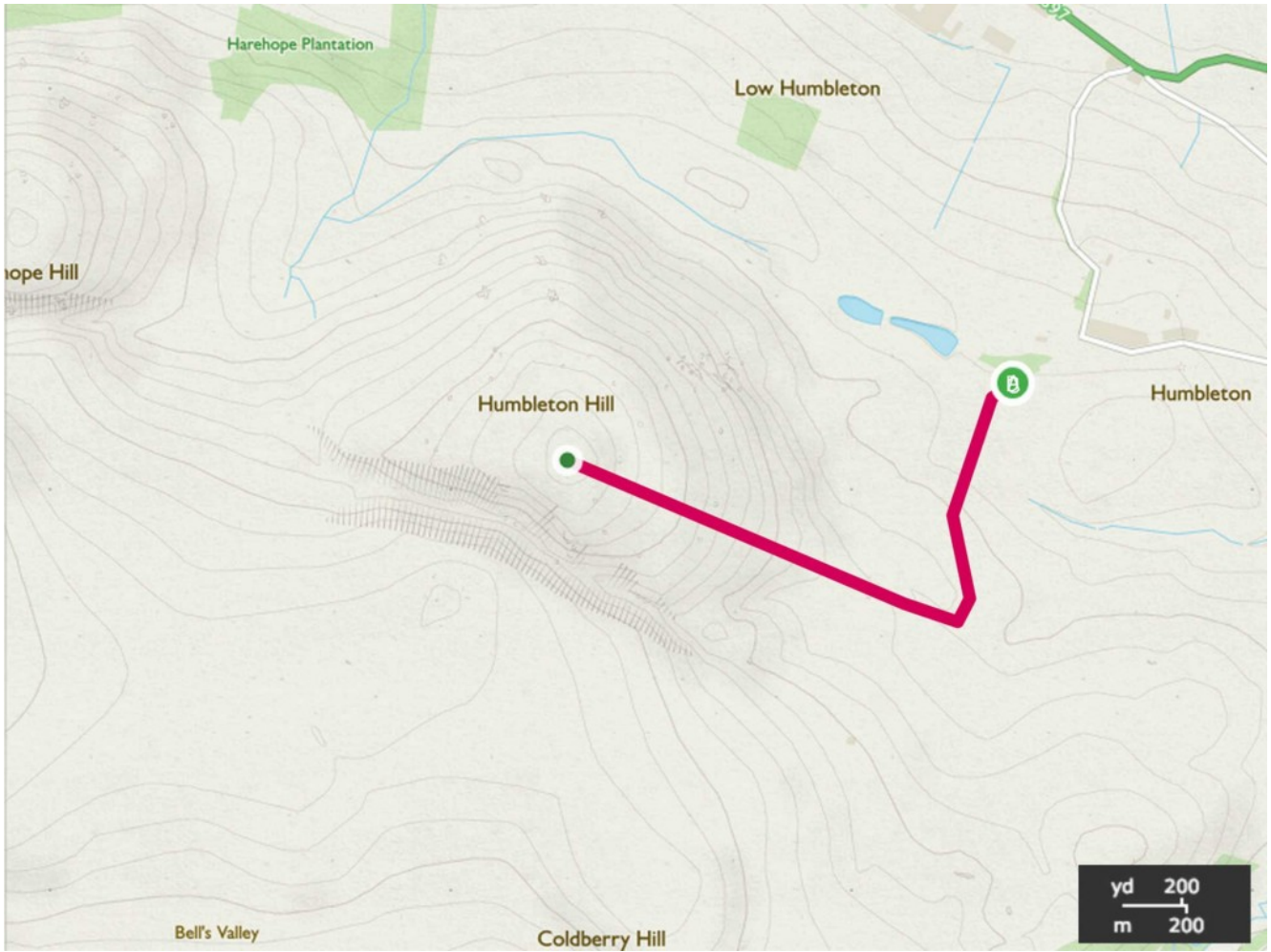
Climb to the summit of Humbleton Hill (historically Homildon Hill) for expansive views over Wooler and the surrounding countryside. At the summit you will find the remains of the Iron Age hillfort that stood here. Why not take a picnic if the weather's good!

Turn right out of the cottage gate and go through the gate into the National Park. Continue straight ahead up the track heading past farmland.

After passing by fields, keep an eye out for a footpath signed to your right, visible leading directly up the slopes of Humbleton Hill.

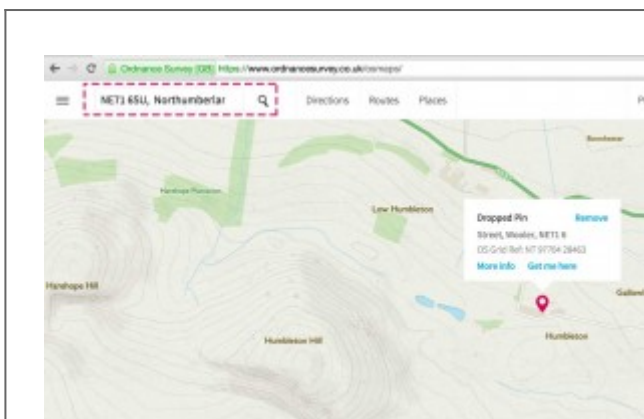
Turn right at the footpath and follow it as it climbs to the summit of Humbleton Hill. (This direct route tackles the contours head on – an [alternative route](#) takes a more gentle approach by looping round the hill first.) Upon reaching the summit, the 360° view will open up around you.

You can return the way you came for the shortest route back to the cottage. Or, to extend the walk, continue across the hill and descend on the opposite side. When you reach the path at the bottom (T-junction) you can choose to turn either left or right to loop back around Humbleton Hill to Homildon Cottage.

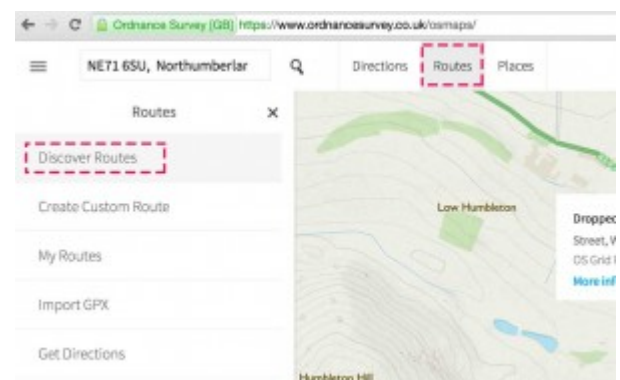


Homildon Hillfort Walk – OS Maps

To view the route on an interactive map, visit [OS Maps](https://www.ordnancesurvey.co.uk/osmaps/):

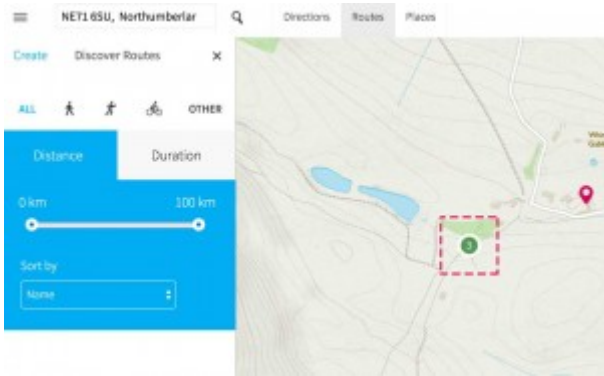


STEP 1: Search our postcode, NE71 6SU

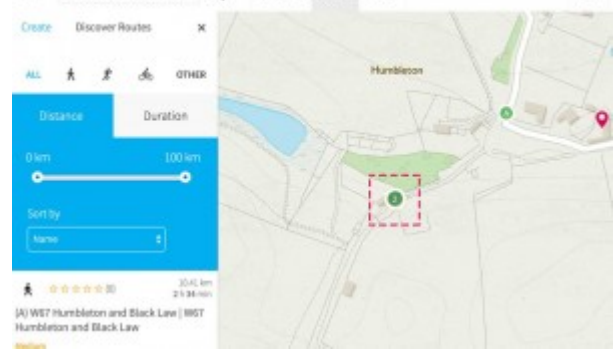


STEP 2: Select “Routes” at the top, then “Discover routes” on the left

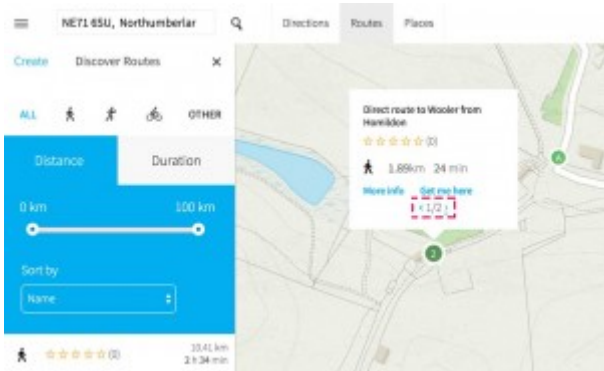
If you do not have one already, you will need to set up an account at this stage.



STEP 3: Click the green circle with a number over it



STEP 4: Click the green circle with a number over Homildon Cottage's location



STEP 5: In the dialog you can scroll between the routes

If you prefer a paper map, the best choice is the [The Cheviot Hills, Jedburgh & Wooler \(OS Explorer 0L16\)](#). Alternatively if you prefer the Landranger maps, the sheet needed is [Berwick-upon-Tweed \(OS Landranger Map 75\)](#)

View from Humbleton Hill



