

Walk to Wooler from Homildon Cottage – direct route

The most direct walk to Wooler is mostly along a quiet road – aside from a short but pleasant stretch of footpath cutting a corner across a field.

- Start: Homildon Cottage
- Finish: Wooler
- Time: 15-20 minutes
- Distance: 1.25 miles

Walking at a reasonable pace, this can be done in quarter of an hour – or take your time at a leisurely stroll.

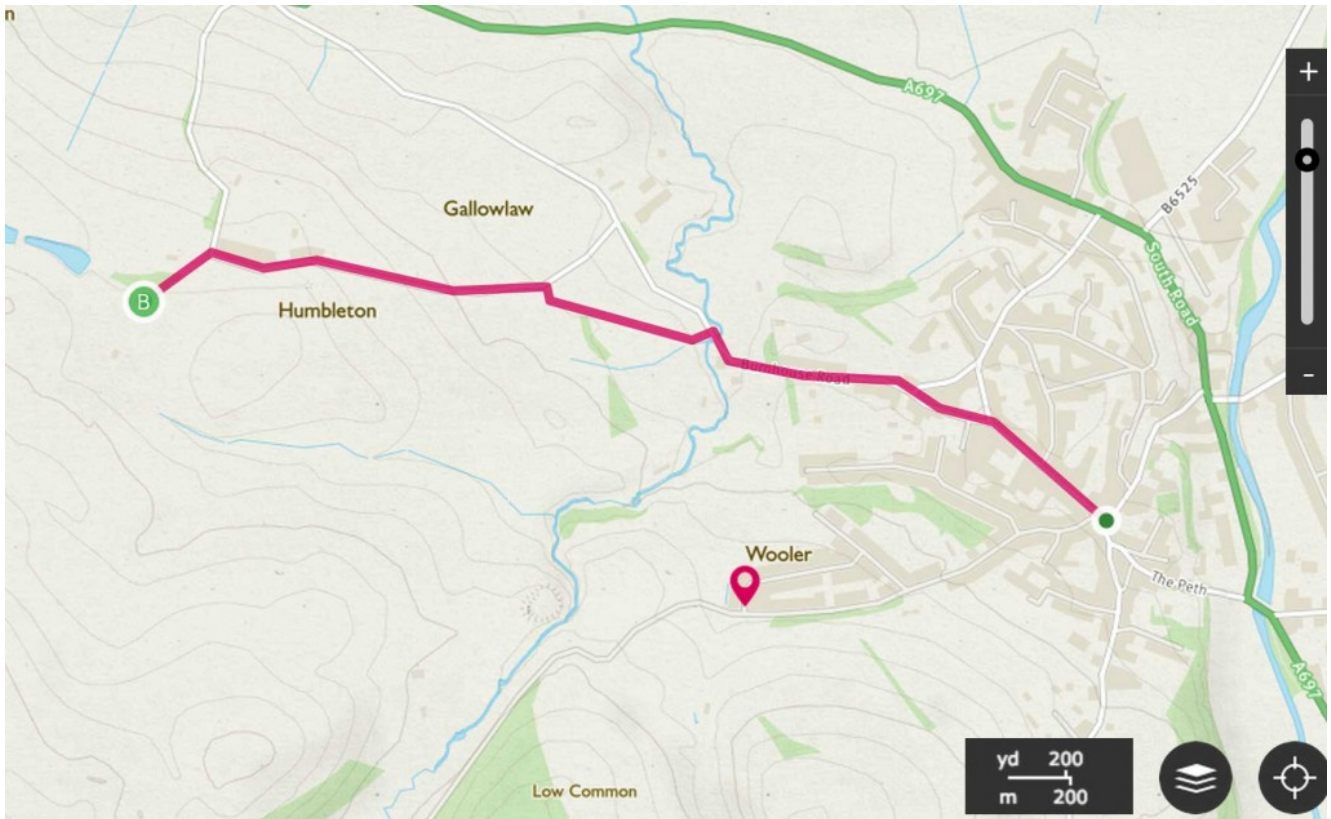
Start by turning left out of Homildon Cottage's drive, and then right at crossroads in High Humbleton.

Leaving the hamlet behind you, you will come to a bench on the right, with a footpath sign (A). Take this path to cut the corner, walking through two fields. At the bottom of the hill, do not follow the track round into the camp site but exit onto the road, turning right. If you do not wish to cross these fields, you can instead continue on the road from the bench at point (A), turning right when you reach the crossroads.



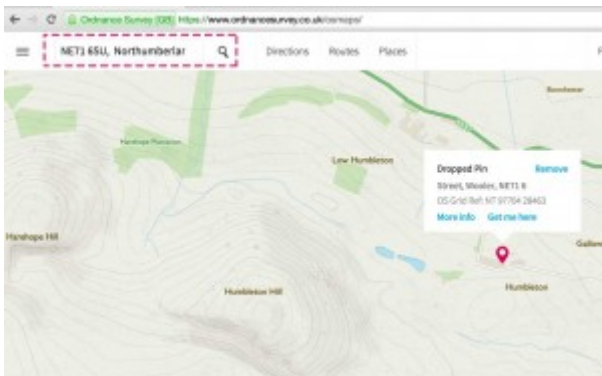
Cut across the field to
Wooler

Follow the road past the entrance to the Highburn House camp site into Wooler itself.

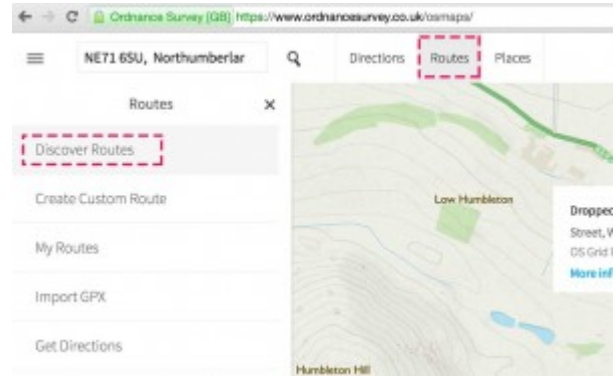


OS Maps

To view the route on an interactive map, visit [OS Maps](#):

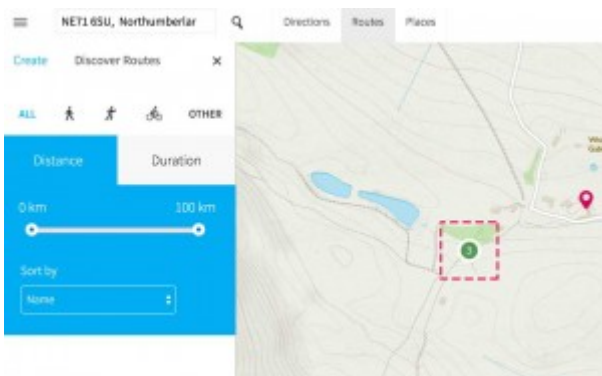


STEP 1: Search our postcode, NE71 6SU

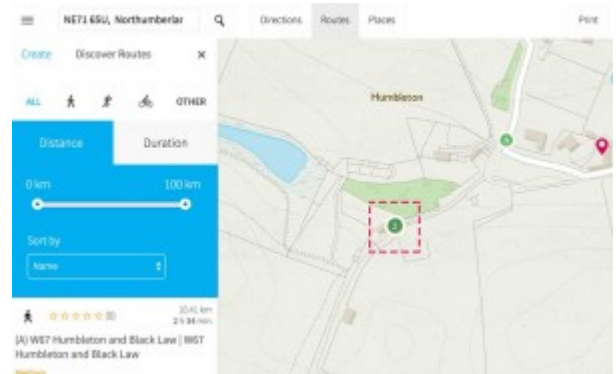


STEP 2: Select “Routes” at the top, then “Discover routes” on the left

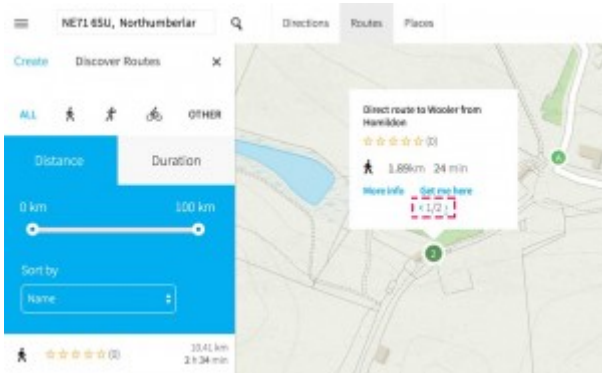
If you do not have one already, you will need to set up an account at this stage.



STEP 3: Click the green circle with a number



STEP 4: Click the green circle with a number over Humildon Cottage’s location



STEP 5: In the dialog you can scroll between the routes

If you prefer a paper route map, the best choice is the [The Cheviot Hills, Jedburgh & Wooler \(OS Explorer OL16\)](#). Alternatively if

you prefer the Landranger maps, the sheet needed is [Berwick-upon-Tweed \(OS Landranger Map 75\)](#).